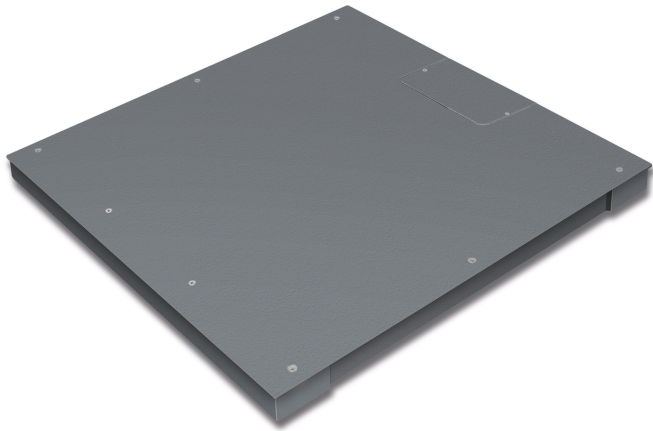


# KERN KFP 1500V20SNM

# KERN

Weighing bridge made from steel, also with weighing plate screwed on from the top



## Functions

|                           |      |
|---------------------------|------|
| IP protection - load cell | IP67 |
|---------------------------|------|

## Environmental conditions

|                           |        |
|---------------------------|--------|
| Ambient temperature [Min] | -10 °C |
| Ambient temperature [Max] | 40 °C  |

## Packing & Shipping

|                              |                  |
|------------------------------|------------------|
| Readability force [d] (N)    | 2 d              |
| Dimensions packaging (W×D×H) | 1050×1050×260 mm |
| Net weight                   | 97 kg            |
| Shipping method              | Freight          |
| Net weight approx.           | 100 kg           |
| Gross weight approx.         | 125 kg           |
| Shipping weight              | 123 kg           |

## Services (optional)

|  |         |
|--|---------|
| Article number for conformity assessment | 965-230 |
| Article number for DAkkS calibration     | 963-130 |

## Pictograms

### STANDARD



### FACTORY



## Category

|                  |                 |
|------------------|-----------------|
| Brand            | KERN            |
| Product category | Component       |
| Product group    | Weighing bridge |
| Product family   | KFP-V20-IP67    |

## Measuring System

|                         |                 |
|-------------------------|-----------------|
| Weighing capacity [Max] | 1500 kg         |
| Readability [d]         | 500 g           |
| Minimum weight [Min]    | 10 kg           |
| Loadcell type           | ZEMIC H8C 1 ton |
| Load cell connection    | 6-wire          |

## Approval

|   |       |
|---|-------|
| Accuracy classe                         | III   |
| Verification scale interval [e]         | 500 g |
| Conformity assessment possible ex works | ✓     |

## Construction

|   |                      |
|---|----------------------|
| Dimensions weighing platform (W×D×H)      | 1000×1000×85 mm      |
| Material weighing plate                   | steel, powder-coated |
| Material platform                         | steel, powder-coated |
| Dimensions weighing surface (W×D)         | 1000×1000 mm         |
| Cable length                              | 5 m                  |
| Allowed cable length display device [Max] | 20 m                 |
| Material load cell(s)                     | alloyed steel        |
| Load cells - number                       | 4                    |
| Levelling feet adjustable                 | ✓                    |